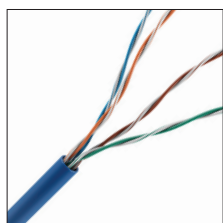


CAT5E RISER CABLE

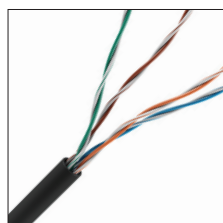
24/4 CMR/FT4 PULL BOX



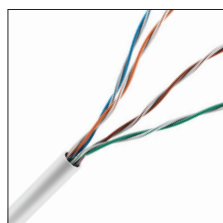
SPEC SHEET



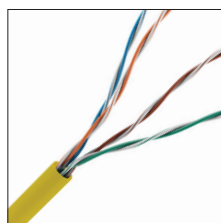
0E-CAT5RBL



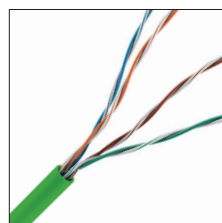
0E-CAT5RBK



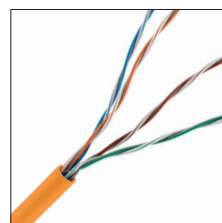
0E-CAT5RWH



0E-CAT5RYW



0E-CAT5RGN



0E-CAT5ROR

Physical Characteristics

Conductor: 24 AWG Solid Bare Annealed Copper

Insulation: HDPE (High Density Polyethylene)

Conductor Color Code:

- Pair 1: Blue - White/Blue
- Pair 2: Orange - White/Orange
- Pair 3: Green - White/Green
- Pair 4: Brown - White/Brown

Rip Cord: Applied longitudinally under jacket

Jacket: PVC (Flame-Retardant, SUN RES & RoHS compliant)

Jacket Legend:

- 0000FT CAT 5E 4 PR 24 AWG E507576 (UL) CMR c(UL)us FT4 SUN RES 75C (RoHS)
- UL VERIFIED TO TIA-568.2-D CAT5E ##### RM# A B C D E F 1 2 3 4 5 6 7 8 9

Nominal Cable Diameter (in.): 0.200

Nominal Cable Net Weight (lbs./1000ft.): 19.40

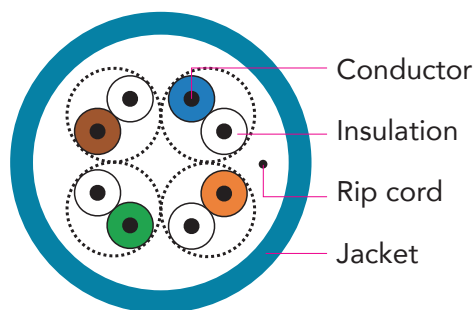
Minimum Bend Radius (in.): 1.0

Maximum Pulling Force (lbs.): 25

Temperature Rating (°F):

- Installation: +32 to +140
- Storage & Operation: -4 to +167

Operating Voltage: 300V



Applications

IEEE802.3: 1000BASE-T (Gigabit Ethernet),
100 BASE-TX, 10 BASE-T, 155Mp/s,
622Mp/s ATM, ANSI X3.263: 100Mb/s,
4/16 Mb/s Token Ring, Broadband and
Baseband Analog Video



For more information contact
your ADI Sales person or visit
adiglobal.com/adiexclusivebrands

CAT5E RISER CABLE

24/4 CMR/FT4 REEL IN BOX



Standard Compliance

- ANSI/TIA-568.2-D
- ANSI/TIA-862 (Building Automation)
- IEC 11801 Ed.2.0 (Class D)
- ICEA S-90-661 (Category 5e)
- NEC/CEC Type CMR (UL 1666) for Riser
- UL 444
- RoHS Compliant Directive 2011/65/EU

Certifications



Certifications for Management System

ISO9001: 2008, ISO14001: 2004, OHSAS 18001

Electrical Characteristics

| Max. Capacitance (nF/100m @ 1 kHz) | Max. DC Resistance (Ω /100m @ 68°F) | Dielectric Strength (DC-kV, 2s) | Characteristic Impedance (Ω 1~100 MHz) |
|---------------------------------------|--|------------------------------------|---|
| 5.6 | 9.38 | 2.5 | 100 \pm 15 |

| Frequency MHz | Insertion Loss Max. dB/100m | NEXT Min. dB/100m | PSNEXT Min. dB/100m | ACRF Min. dB/100m | PSACRF Min. dB/100m | Return Loss Min. dB/100m | PD Max. ns/100m | PD Skew Max. ns/100m |
|------------------|--------------------------------|----------------------|------------------------|----------------------|------------------------|-----------------------------|--------------------|-------------------------|
| 1 | 2.0 | 65.3 | 62.3 | 63.3 | 60.8 | 20.0 | 570 | 45 |
| 4 | 4.1 | 56.3 | 53.3 | 51.8 | 48.8 | 23.0 | 552 | 45 |
| 10 | 6.5 | 50.3 | 47.3 | 43.8 | 40.8 | 25.0 | 545 | 45 |
| 16 | 8.2 | 47.2 | 44.2 | 39.7 | 36.7 | 25.0 | 543 | 45 |
| 20 | 9.3 | 45.8 | 42.8 | 37.8 | 34.8 | 25.0 | 542 | 45 |
| 31.25 | 11.7 | 42.9 | 39.9 | 33.9 | 30.9 | 23.6 | 540 | 45 |
| 62.5 | 17.0 | 38.4 | 35.4 | 27.9 | 24.9 | 21.5 | 539 | 45 |
| 100 | 22.0 | 35.3 | 32.3 | 23.8 | 20.8 | 20.1 | 538 | 45 |
| 200 | 32.4 | 30.8 | 27.8 | 17.8 | 14.8 | 18.0 | 537 | 45 |
| 350 | 44.9 | 27.1 | 24.1 | 12.9 | 9.9 | 16.3 | 536 | 45 |

* Spec meets ANSI/TIA 568.2-D standard. Sweep Tested to 350Mhz. All values are dB/100m (328 ft.)



For more information contact
your ADI Sales person or visit
adiglobal.com/adiexclusivebrands